

ESTER

MODERN BOLLARD



Architectural LED lamp range in modern style, made of shockproof resin material, UV-rays stabilized, rust and corrosion-free. Square bollards in different sizes, spike and wall mounted versions available. Supplied with stepped shape reflector and with TÜV approved, long-life and efficient **GX53 LED lamps included**. Insulation class II, Protection rating IP55.

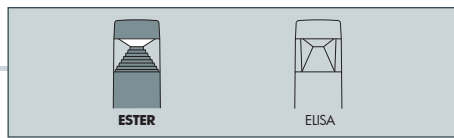
*Collezione di lampade architettoniche a LED in stile moderno, realizzata in resina antiurto, stabilizzata ai raggi UV, inattaccabile da ruggine e corrosione. Ampia gamma di versioni disponibili per installazioni su stelo bollard quadro in diverse altezze, con picchetto o a parete. Provvista di riflettore a scaletta piramidale e fornita con **lampadine a LED GX53** approvate TÜV di lunga durata ed elevata efficienza. Classe di isolamento II, grado di protezione IP55.*



DS1.564.D1L

UV-TREATED	DOUBLE INSULATION		PUBLIC	RESIDENTIAL
RECYCLABLE	ANTI-SHOCK	TEMPERATURE	WALL	POST
				SPIKE





ESTER COMPONENTS

IP55



CAP fixed to the diffuser with no visible screws made of shockproof resin material, UV-rays stabilized, rust and corrosion-free.

CALOTTA fissata al diffusore senza viti a vista, realizzata in resina antiurto, stabilizzata ai raggi UV, inattaccabile da ruggine e corrosione

DIFFUSER in clear colour made of UV-rays stabilized polymethylmethacrilate (PMMA).

DIFFUSORE trasparente realizzato in polimetilmetacrilato (PMMA) resistente all'ingiallimento ed ai raggi UV.

REFLECTOR with stepped shape spreading the lighting output to emphasize the shape of the product. Made of shockproof resin material

RIFLETTORE a scaletta piramidale che consente al fascio di luce di enfatizzare la sagoma del prodotto. Realizzato in resina antiurto.



INSTALLATION ELEMENTS:

- POLES for bollard versions
- BASE for wall and surface installation
- SPIKE for in ground installation

ELEMENTI DI FISSAGGIO:

- STELI per versione bollard
- BASE per installazione a parete e al suolo
- PICCHETTO per installazione nel terreno

ESTER



Dimensions

Height: 165/500/800 mm
Width: 126 mm
Depth: 126 mm

Moulded colours:

- Black
- White
- Grey

Diffuser PMMA:

- Clear

GX53 LED

*ADD. SUFFIX



GX53 LED	3 W	350 Lm	4000 K	.G1L
			3000 K	.G1R
GX53 LED	7 W	800 Lm	4000 K	.C1L
			3000 K	.C1R
GX53 LED	10 W	1200 Lm	4000 K	.D1L
			3000 K	.D1R

- **COST SAVING:** long-life and efficient LED light sources
- **BUILT-IN DRIVER:** quick and easy lamp replacement
- **GREAT FLEXIBILITY:** GX53 standard lamp holder
- **FUTURE-PROOFED LUMINARIES:** easy to upgrade
- **SUITABLE FOR OUTDOOR USE:** driver fully protected against heat and humidity by silicone paste.

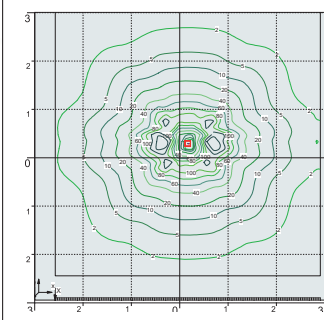
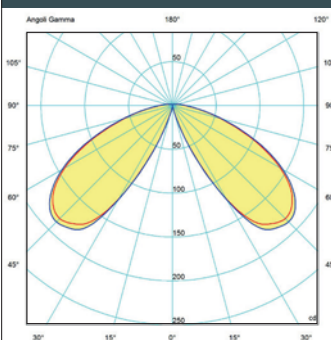
Bollard supplied with TÜV approved, long-life and efficient **GX53 LED lamp** included. Different wattages available.

LED LAMPS



More technical details about TÜV approved Fumagalli LED Lamps on page 512.

PHOTOMETRIC DATA SAMPLE



ESTER 800 clear GX53 10W.

Bollard height 0,8 mt
Area: 6x6 mt - average 15 lux

The photometric data for all the versions are available upon request or on our website.

3W = 40W
350 Lm incandescent
SAVE 93%

7W = 75W
10W incandescent
SAVE 90%

ESTER

MODERN BOLLARD



DS1.564.D1L



DS1.560.D1L

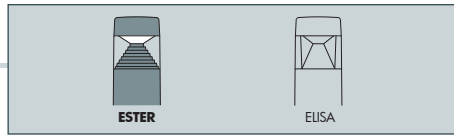


DS1.561.D1L



DS1.563.D1L





ESTER 800		
DS1.564.G1L	3W	DS1.564.G1R
DS1.564.C1L	7W	DS1.564.C1R
DS1.564.D1L	10W	DS1.564.D1R
4000K	GX53 LED LAMP INCLUDED	3000K
Pcs 6 Kg 16 mc 0,145		

ESTER 500		
DS1.563.G1L	3W	DS1.563.G1R
DS1.563.C1L	7W	DS1.563.C1R
DS1.563.D1L	10W	DS1.563.D1R
4000K	GX53 LED LAMP INCLUDED	3000K
Pcs 12 Kg 24 mc 0,145		

ESTER WALL		
DS1.560.G1L	3W	DS1.560.G1R
DS1.560.C1L	7W	DS1.560.C1R
DS1.560.D1L	10W	DS1.560.D1R
4000K	GX53 LED LAMP INCLUDED	3000K
Pcs 18 Kg 22 mc 0,092		

ESTER SPIKE		
DS1.561.G1L	3W	DS1.561.G1R
DS1.561.C1L	7W	DS1.561.C1R
DS1.561.D1L	10W	DS1.561.D1R
4000K	GX53 LED LAMP INCLUDED	3000K
Pcs 18 Kg 23 mc 0,092		